

OFFICE OF THE PRINCIPAL WOMEN'S COLLEGE JHARSUGUDA

No-427

TENDER CALL NOTICE

Date- 17.04.2026

Sealed tenders are hereby invited from eligible and authorized suppliers/agencies for the following works under the DHE(O) Grant for the college:

1. Supply of All-in-One Desktops with Components

Supply, installation, and commissioning of branded All-in-One Desktop Computers along with required accessories and components as per the specifications attached with the tender document.

2. Construction of Disabled-Friendly Toilets

Construction of:

1. One (01) Boys' Toilet
2. One (01) Girls' Toilet

Both units must be disabled-friendly, designed and executed as per the specifications and accessibility norms detailed in the attached document.

General Terms & Conditions:

1. Interested bidders may obtain the detailed tender documents, including specifications and terms & conditions, from the college office during working hours or download them from [website, if applicable].
2. The tender must be submitted in a sealed envelope superscribed with **"Tender for Supply of All-in-One Desktops"** or **"Tender for Construction of Disabled-Friendly Toilets"**
3. Bidders may apply for one or both categories, but must submit separate bids for each.
4. The last date for submission of the tender is **24.04.2026 up to 5.00pm**.
5. Tenders will be opened on **25.04.2026 at 10.00AM**.
6. The authority reserves the right to accept or reject any or all tenders without assigning any reason thereof.
7. All works must be completed within the stipulated time mentioned in the work order.
8. The bidders must have valid registration, GST, PAN, and relevant experience in similar works.

College Address- The Principal Women's College, Jharsuguda Pin-768201.

WEBSITE- <http://www.womenscollegejharsuguda.edu.in/>

Rita Palit

ACCOUNT BURSAR
WOMEN'S COLLEGE, JHARSUGUDA

Rhymini
Principal
Women's College, Jharsuguda

COPY TO

1. COLLEGE WEBSITE
2. OFFICE GUARD FILE
3. NEWS PAPER AGENCY FOR ADVERTISEMENT
4. DEALING CLERK FOR THE NEEDFUL

1. MINIMUM SPECIFICATION REQUIRED FOR ALL-IN-ONE DESKTOP/COMPUTERS

General Specification

Specification	Details
Operating System	Windows 11 Home (64-bit)
Dimensions	493 x 395 x 165 mm
Warranty	1 Year

Display

Specification	Details
Type	IPS
Touch	No
Size	21.45 inches
Resolution	1920 × 1080 pixels
Anti-Glare Screen	Yes
Features	86% Screen-to-Body Ratio, 1000:1 Contrast Ratio, 250 nits Brightness
Full HD	Yes

Connectivity

Specification	Details
Ethernet	Yes
WiFi	Yes
Bluetooth	Yes
USB Ports	1 × USB Type-C, 4 × USB Type-A
USB Port Details	1 × USB 3.2 Gen 1 Type-C, 3 × USB 3.2 Gen 1 Type-A, 1 × USB 2.0 Type-A
HDMI	1 × HDMI Port
Other Ports	1 × 3.5 mm Headphone/Microphone Combo Jack

Input

Specification	Details
Camera	Yes
Inbuilt Microphone	Yes
Speakers	2 × 3W
Optical Drive	No

Graphics

Specification	Details
GPU	UHD Graphics

Memory

Specification	Details
RAM	8 GB DDR4
Storage	512 GB SSD

EXTRA INCLUDED

Specification	Details
INCLUDED	All-in-One Desktop+ Wireless Keyboard, Wireless Mouse, Power Adapter, User Manual

Processor

Specification	Details
Processor	Celeron 7305
Speed	1 × Performance Core, 4 × Efficient Cores
Cores	5 Cores (1P + 4E), 5 Threads
Cache	8 MB
Series	Celeron
Model	7305

2. UPS SPECIFICATION

Battery Cell Composition	Lead Acid
Item Dimensions LxWxH	32.4 x 14 x 22 Centimetres
Voltage	230 Volts
Colour	Black

About the item

- It is generator compatible. Output voltage regulation (Batt.mode): +/- 10%
- Protects from overloading. Input voltage range: 140-300VAC.
- Surge Protection: Yes
- Micro controller based
- Sleep mode charging
- LED indicator
- Capacity 600VA
- Transfer time Type 4-8 ms

3. MULTI FUNCTION LASER PRINTER- MFP(s) SPECIFICATIONS

General Specification

Specification	Details
Printer Type	Laser
Printer Output Type	Colour
Additional Functions	Copy, Scan
Special Features	Auto Document Feeder, Auto-Duplex, Network-Ready, Scan To E-Mail, Touch Screen
Scanner Type	Flatbed
Display Type	CGD
Compatible Devices	Laptops, PC, Smartphones

Print Speed

Specification	Details
Color Pages per Minute	25 ppm
Black & White Pages per Minute	25 ppm

Paper Handling

Specification	Details
Maximum Media Size	A4
Supported Paper Sizes	A4, A5
Maximum Sheet Capacity	250 sheets
Printing Media Type	Plain Paper

Color Details

Specification	Details
Colour	White
Color Depth	24 Bits

Connectivity

Specification	Details
Network Connectivity	Ethernet, USB, Wi-Fi

Print Resolution

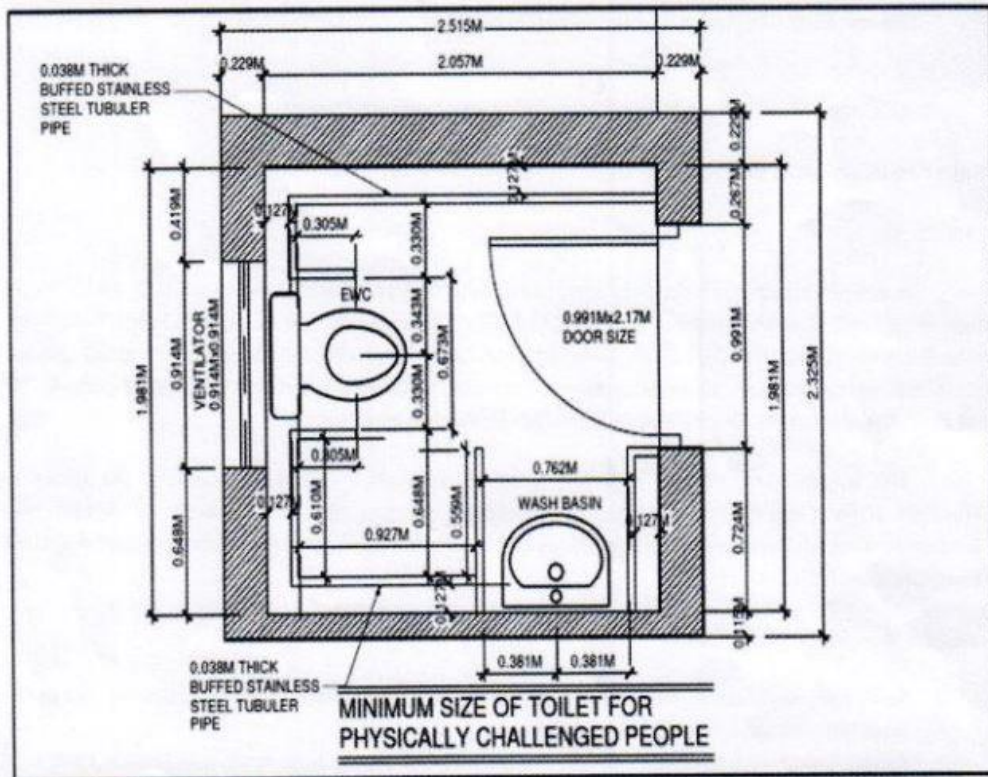
Specification	Details
Max Print Resolution (Colour)	600 × 600 dpi
Max Print Resolution (B&W)	600 × 600 dpi

Duplex Printing

Specification	Details
Duplex	Automatic

DISABLED-FRIENDLY TOILETS PLAN

Plan:



Rohini
Principal
Women's College, Jharsuguda